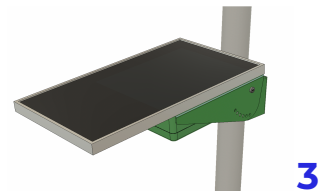
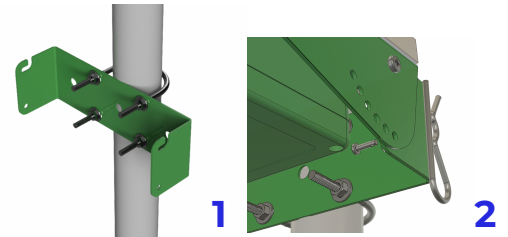


A Installation

- A** Carefully remove the sensor module and the solar panel module from the outer packaging.
- B** **Mounting of the sensor module and solar panel module:** Attach to a fixed post using the mounting rings included*. The mounting rings should be adjusted to fit the size of the post. The modules should be attached tightly so that there is no movement once attached. Ideally, the solar panel should be south-facing (in the northern hemisphere) or north-facing (in the southern hemisphere) and tilted to approximately 45 degrees. However, this isn't critical as long as the panel is facing the sun. **Please refer to Images 1, 2, and 3.**

*Note: In the case of the post not being perfectly compatible with our brackets, you will have to provide your own screws or additional hardware to ensure a secure fit. If you encounter any issues, please contact our support team for further assistance.
- C** **Connection of the sensor module to the solar panel module:** Use the cable with waterproof blue connectors on either end. There should be only one port on the solar panel module to connect to. The connector is keyed to prevent incorrect insertion. Once correctly installed, secure with the screw fitting to prevent it detaching. **Please refer to Image 4.**
- D** **Connection to the SecondSky data platform:** Use your phone camera to scan the QR code on the sensor module. This link will direct you to an enrolment page on SecondSky Data, where you can assign the sensor unit to a site and zone (or create one, if necessary). **Please refer to Image 5.**
- E** **Power up to sensor unit:** Flip the power switch on the solar panel module, this will turn on the unit. If the connection is successful, the blue LED light should be visible on the sensor module. **Please refer to Image 6.**
- F** Check that the installation is successful. **Please refer to Image 7** to confirm that the installation was correctly completed.



B Platform Registration

Registration details will be provided by **SecondSky Data Support**.

Scan the QR Code for More Information



If you need help or have any questions, please contact our SecondSky Data team at data.support@secondsky.com